

NISBETS ESSENTIALS

250mm Stick Blender Instruction manual



**Model:
DK849-A**

Safety Instructions

The blender is a dangerous appliance and must only be used by trained personnel in accordance with these instructions.

Please take a few moments to carefully read through this manual. Correct maintenance and operation of this machine will provide the best possible performance from your product. Save these instructions.

- A service agent/qualified technician should carry out installation and any repairs if required. Do not remove any components on this product.
- Consult Local and National Standards to comply with the following:
 - Health and Safety at Work Legislation
 - Fire Precautions
 - IEE Wiring Regulations
 - Building Regulations
- **Blade is sharp – handle carefully.**
- To protect against electrical shock, never put motor unit in water or any other liquid.
- Do not use to blend hard and dry substances to avoid injury or damage.
- DO NOT use with loose or damaged blades.
- The use of accessory attachments not recommended or sold by Nisbets Essentials may cause fire, electric shock, or injury, which will invalidate your guarantee.
- DO NOT remove food from the appliance until the blending attachment have come to a complete stop.
- Avoid contacting moving parts. Keep hands, hair, clothing and utensils away from blade and mixing container whilst in operation to prevent the possibility of severe injury to persons and/or damage to the appliance.
- DO NOT operate the unit if damaged.
- DO NOT use jet/pressure washers to clean the appliance.

- DO NOT attempt to blend items that this machine is not designed for. This can damage the blending attachments.
- Always switch off and disconnect the appliance from power supply before approaching parts that move in use, when left unattended, before assembling, disassembling or cleaning.
- Not suitable for outdoor use.
- Keep all packaging away from children. Dispose of the packaging in accordance to the regulations of local authorities.
- If the power cord is damaged, it must be replaced by a Nisbets Essentials agent or a recommended qualified technician in order to avoid a hazard.
- This appliance is not to be used by persons with reduced physical, sensory or mental capabilities or lack of experience and knowledge, unless they have been given supervision or instruction.
- The appliance shall not be used by children. Keep the appliance and its cord out of reach of children.
- DO NOT let cord hang over edge of table or counter, or touch hot surfaces.
- Nisbets Essentials recommend that this appliance should be periodically tested (at least annually) by a Competent Person. Testing should include, but not be limited to: Visual Inspection, Polarity Test, Insulation Continuity and Functional Testing.

Introduction

Please take a few moments to carefully read through this manual. Correct maintenance and operation of this machine will provide the best possible performance from your Nisbets Essentials product.

This appliance is intended for use in kitchens of restaurants, canteens and similar commercial catering facilities when mixing and liquidising and giving soups and sauces a perfect consistency. The unit can be used directly in a container to mix or blend everything from fish soups, stews, creams and salad dressings to pancake mixes, pastes, sauces, mayonnaise and alike.

Pack Contents

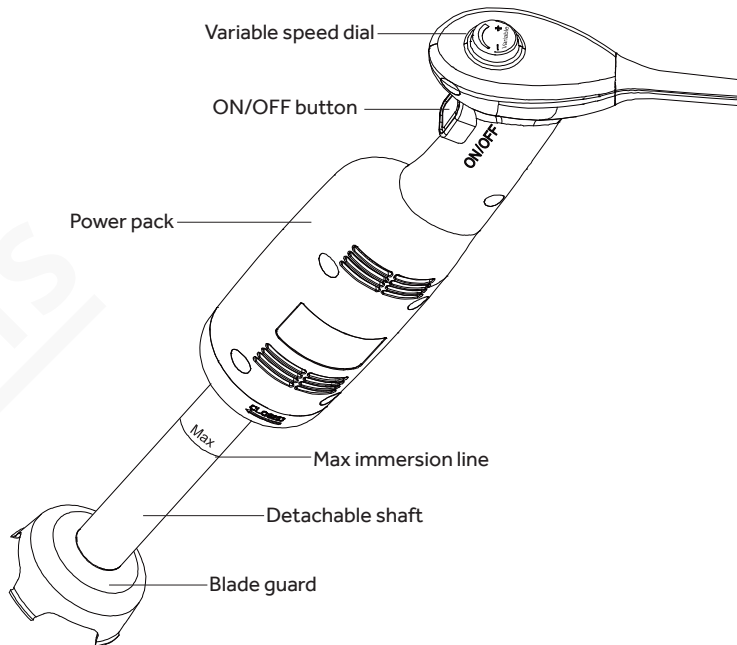
The following is included:

- Power pack
- Detachable shaft with blade pre-mounted
- Blade removal kit
- Instruction manual

Nisbets Essentials prides itself on quality and service, ensuring that at the time of unpacking the contents are supplied fully functional and free of damage.

Should you find any damage as a result of transit, please contact your Nisbets Essentials dealer immediately.

Operation



Assembly

Before assembly, ensure to

- **Disconnect the power pack from the power supply.**
- **Clean all parts that come into contact with food with warm soapy water. For details, refer to section "Cleaning, care & maintenance".**
- **Blades are sharp! Be careful when emptying the container and during cleaning.**
- **Nisbets Essentials accept no responsibility for any injury caused by incorrect assembly/disassembly.**

1. Align and attach the power pack to the shaft.
2. Hold the power pack with one hand and turn the shaft anti-clockwise until secured in place.

Blending

1. Connect the appliance to the power supply.
2. Press and hold the ON/OFF button to start the blender.
3. Select speed using the variable speed dial.
4. To stop the blender, just release the ON/OFF button.

- **The appliance is to use with liquids or semi-liquid mixtures. To avoid overheating or damage, do not allow it to run in the air for more than 10 seconds.**
- **For greater control, we recommend holding the blender by the handle and the bottom of the power pack. Furthermore, it is recommended to tilt the blender slightly to prevent the blade guard from touching the bottom of the container.**
- **Always make sure that the blade guard is sufficiently immersed to avoid splashing and that the air vents of the motor unit do not come into contact with any liquid. For optimum efficiency, two thirds of the shaft should be immersed during preparation but ensure not to exceed the Max immersion line.**
- **It is advisable to start at a low speed.**
- **During use, the stainless steel shaft may become hot. Take care not to touch it.**
- **Be careful of potential injury from misuse.**
- **During use, never let the blending attachments face towards people or objects. Risk of damage or injury!**

Removing lodged food

If a piece of food gets lodged in the protective blade guard surrounding the metal blade, please follow the instructions below:

1. Turn off blender, disconnect from power supply and let it come to a complete stop.
2. Ensure the shaft is cool enough to handle first and turn it clockwise to remove from the power pack.
3. Use a spatula to carefully remove the food lodged in the blade guard. **The blade is sharp - Never attempt to use fingers to remove any lodged object.**
4. Re-attach the shaft, plug unit back in and continue blending.

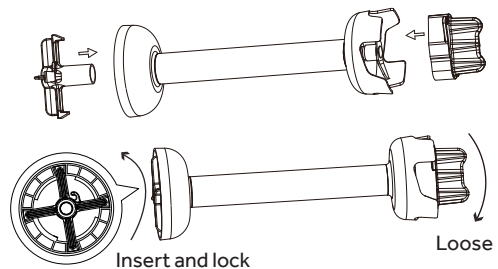
Cleaning, Care & Maintenance

Warning: Always ensure to disconnect unit from power supply, let it cool down and come to a complete stop before cleaning.

- After use, clean in time to prevent food from sticking to surfaces.
- Clean the power pack surface using a damp cloth. Always wipe dry after cleaning. Never immerse the motor part in water or rinse it under running water.
- Do not allow any moisture to enter the interior via any ventilation slots.
- The appliance contains no user serviceable parts.

Cleaning the shaft, blade guard, and blade

- Remove the food residue as much as possible.
- Place the shaft and blade guard into a container with water, then switch on for a few seconds for thorough cleaning.
- If necessary, the blade can be removed using the provided blade removal kit for thorough cleaning.



- **WARNING:** Always dry the blades well after cleaning to avoid spotting.
- It is vital to clean thoroughly between each job using a detergent or disinfectant, but never use pure bleach. For plastic parts, do not use detergents that are too alkaline.

Technical Specifications

Note: Due to our continuing program of research and development, the specifications herein may be subject to change without notice.

Model	Voltage	Power	Current
DK849-A	220V-240V~50/60Hz	350W	1.6A

Speed (RPM)	Shaft length	Dimensions h x Ø mm	Weight
4000-20000	250mm	633.7 x 79	2.06kg

Troubleshooting

A qualified technician must carry out repairs if required.

Fault	Probable Cause	Solution
The appliance is not working	The unit is not switched on	Check the unit is plugged in correctly and switched on
	Plug or lead is damaged	Replace plug or lead
	Mains power supply fault	Check mains power supply
Unit stops working suddenly	Overheating protection is activated	Release the ON/OFF button, then unplug. Wait a few minutes for the motor to cool down and the thermal safety mechanism to reset, then restart
Loud noise	Blending shaft not correctly fitted	Remove and refit
	Blending shaft deformed	Contact a qualified technician
	Lodged food in the blade guard surrounding the blade	Turn off, disconnect from power supply and let blender come to a complete stop. Remove lodged food. If necessary, manually check the blade and shaft end are free to rotate while wearing protective gloves. If problem persists, contact a qualified technician

Electrical Wiring

The plug is to be connected to a suitable mains socket.

This appliance is wired as follows:

- Live wire (coloured brown) to terminal marked L
- Neutral wire (coloured blue) to terminal marked N

If in doubt consult a qualified electrician.

Electrical isolation points must be kept clear of any obstructions. In the event of any emergency disconnection being required they must be readily accessible.

Compliance

The product must not be disposed of as household waste. To help prevent possible harm to human health and/or the environment, the product must be disposed of in an approved and environmentally safe recycling process. For further information on how to dispose of this product correctly, contact the product supplier, or the local authority responsible for waste disposal in your area.

Nisbets Essentials parts have undergone strict product testing in order to comply with regulatory standards and specifications set by international, independent, and federal authorities.

Nisbets Essentials products have been approved to carry the following symbol:



All rights reserved. No part of these instructions may be produced or transmitted in any form or by any means, electronic, mechanical, photocopying, recording or otherwise, without the prior written permission of Nisbets Essentials. Every effort is made to ensure all details are correct at the time of going to press, however, Nisbets Essentials reserve the right to change specifications without notice.

DECLARATION OF CONFORMITY

• Conformiteitsverklaring • Déclaration de conformité • Konformitätserklärung • Dichiarazione di conformità •
• Declaración de conformidad

Equipment Type • Uitrustingstype • Type d'équipement • Gerätetyp • Tipo di apparecchiatura • Tipo de equipo	Model • Modèle • Modell • Modello • Modelo
Stick Blender	DK849 (-E & -A)
Application of Territory Legislation & Council Directives(s) Toepassing van Europese Richtlijn(en) • Application de la/des directive(s) du Conseil • Anwendbare EU-Richtlinie(n) • Applicazione delle Direttive • Aplicación de la(s) directiva(s) del consejo	<p>Machinery Directive 2006/42/EC Supply of Machinery (Safety) Regulations 2008 (BS) EN 60335-1:2012 +A11:2014 +A13:2017 +A1:2019 +A14:2019 +A15:2021 (BS) EN 60335-2-14:2006 +A1:2008 +A11:2012 +A12:2016 (BS) EN 62233:2008</p> <p>Electro-Magnetic Compatibility (EMC) Directive 2014/30/EU - recast of 2004/108/EC Electromagnetic Compatibility Regulations 2016 (S.I. 2016/1091) (BS) EN IEC 55014-1:2021 (BS) EN IEC 55014-2:2021 (BS) EN IEC 61000-3-2:2019 +A1:2021 (BS) EN 61000-3-3:2013 +A1:2019 +A2:2021</p> <p>Regulation (EC) No 1275/2008 and Commission Regulation (EU) No 801/2013 (BS) EN 50564: 2011</p> <p>Restriction of Hazardous Substances Directive (RoHS) 2015/863 amending Annex II to Directive 2011/65/EU Restriction of the Use of Certain Hazardous Substances in Electrical and Electronic Equipment Regulations 2012 (S.I. 2012/3032)</p>
Manufacturer Name • Naam fabrikant • Nom du producteur • Name des Herstellers • Nome del produttore • Nombre del fabricante	Nisbets Limited

I, the undersigned, hereby declare that the equipment specified above conforms to the above Territory Legislation, Directive(s) and Standard(s).

Ik, de ondergetekende, verklaar hierbij dat de hierboven gespecificeerde uitrusting goedgekeurd is volgens de bovenstaande Richtlijn(en) en Standaard(en).

Je soussigné, confirme la conformité de l'équipement cité dans la présente à la / aux Directive(s) et Norme(s) ci-dessus

Ich, der/die Unterzeichnende, erkläre hiermit, dass das oben angegebene Gerät der/den oben angeführten Richtlinie(n) und Norm(en) entspricht.

Il sottoscritto dichiara che l'apparecchiatura di sopra specificata è conforme alle Direttive e agli Standard sopra riportati.

El abajo firmante declara por la presente que el equipo arriba especificado está en conformidad con la(s) directiva(s) y estándar(es) arriba mencionadas.

Date • Data • Date • Datum • Data • Fecha • Data

30th August 2023

Signature • Handtekening • Signature • Unterschrift Firma • Firma

DocuSigned by:

Ashley Hooper

B39382C9FD9C478...

DocuSigned by:

Eoghan Donnellan

D352874F7FAB45D...

DocuSigned by:

Brendan Denmeade

386FAD000DFE8483...

Full Name • Volledige naam • Nom et prénom • Vollständiger Name • Nome completo • Nombre completo

Ashley Hooper

Eoghan Donnellan

Brendan Denmeade

Position • Functie • Fonction • Position • Qualifica • Posición

Technical & Quality Manager

Commercial Manager/ Importer

Commercial Manager/ Responsible Supplier

Manufacturer Address • Adres fabrikant • Adresse du producteur • Anschrift des Herstellers • Indirizzo del produttore • Dirección del fabricante

Fourth Way,
Avonmouth,
Bristol,
BS11 8TB
United Kingdom

Unit 9003,
Blarney Business Park,
Blarney,
Co. Cork
Ireland

15 Badgally Road,
Campbelltown
NSW 2560



NISBETS
ESSENTIALS



<http://www.nisbets.com/> 

DK849-A_A5_V2_2024/12/17